



SDLG machines are built to be like the people that own them: hardworking, genuine and reliable. Cost effective, robust machines with fuel efficient engines that are easy to operate and easy to maintain. And when you need parts or service, you can trust your dealership to deliver on the SDLG promise: **Reliability in Action.**



Congratulations SDLG for winning
EFQM Global Excellence Award
One of the top three quality awards in the world

Shandong Lingong Construction Machinery Co., Ltd

Contacts: Budapest, Benczúr u. 11, 1068 Hungary
Website: www.sdlg-eu.com | Email: info@sdlg-eu.com
sales@sdlg-eu.com | +36 30 247 2606

Member of the VOLVO Group Since 2007

SDLG is member of the Volvo Group and one of the largest manufacturers of construction machinery in China, with a wide network of dealerships and service workshops throughout the world.

Reliability in Action

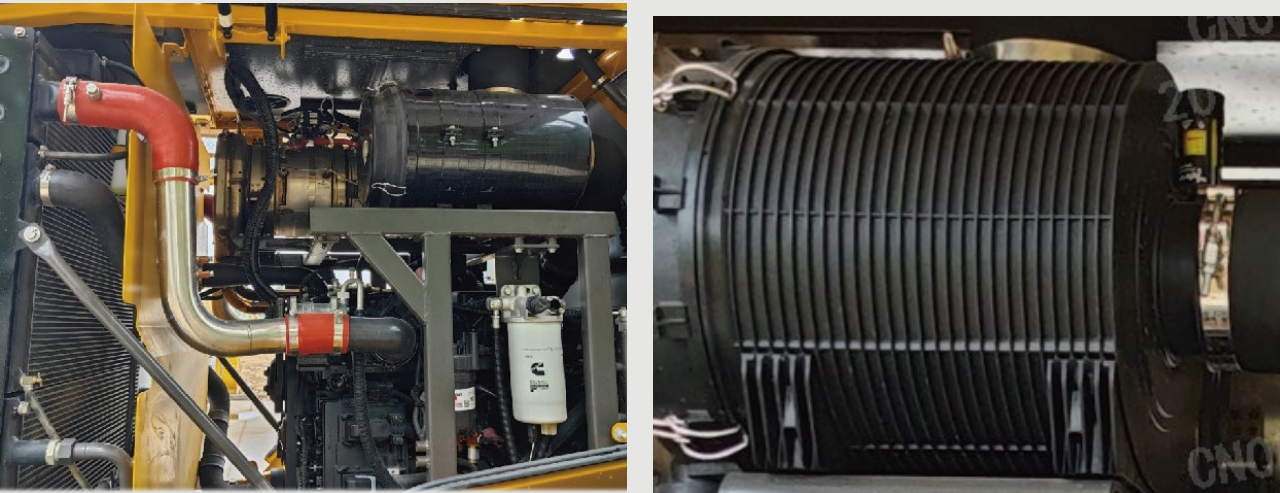


L938H
Wheel Loader



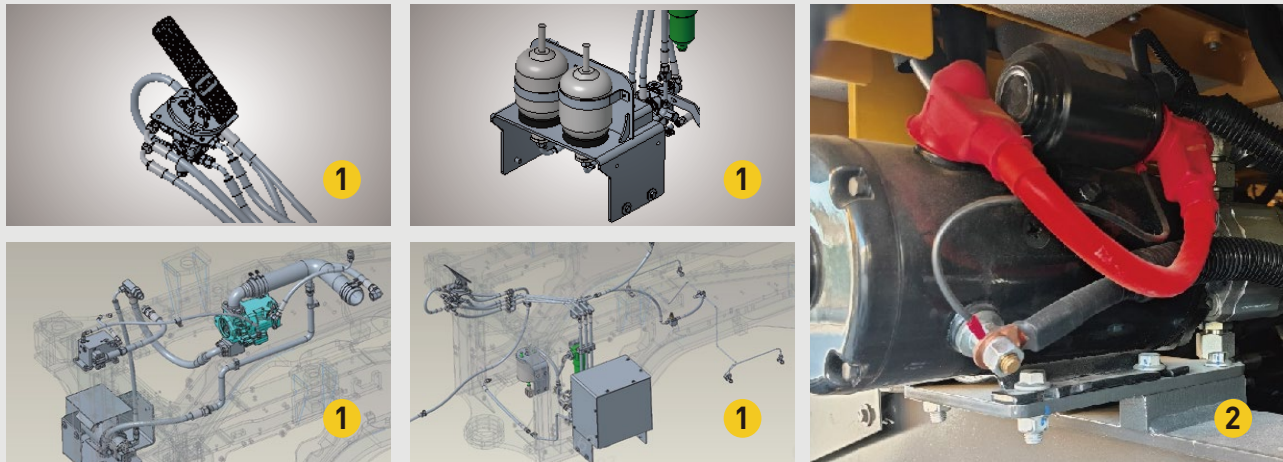
Strong power

- 1 Cummins QSB6.7 engine with DOC+DPF+SCR aftertreatment. The engine has strong power, low noise and reliable performance



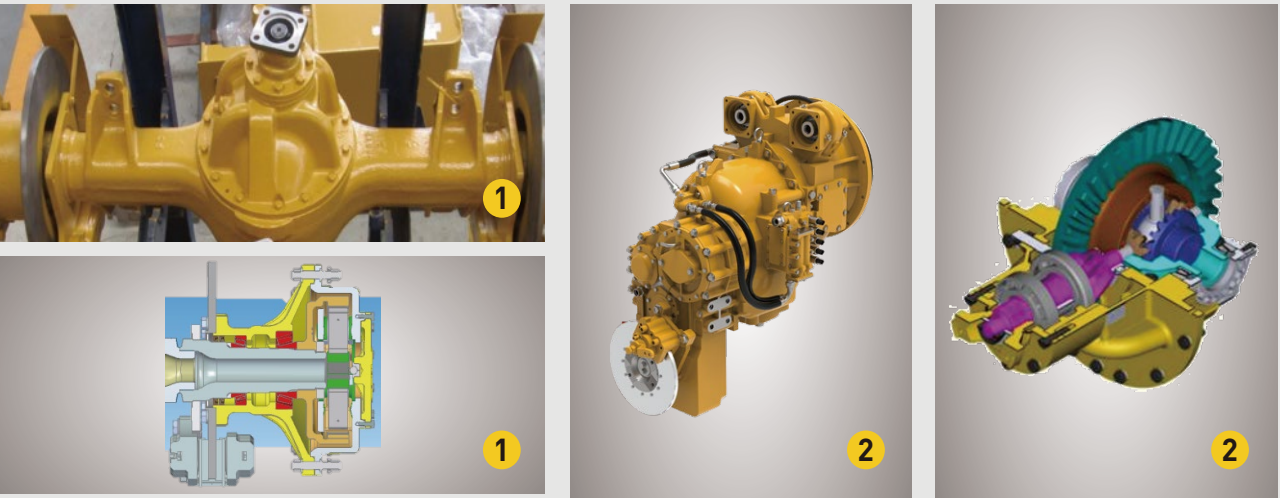
Brake safety

- 1 Full hydraulic double circuit service brake, MICO brake valve and charging valve, good braking effect, high braking reliability
- 2 CE products are equipped with emergency steering as standard, which is activated automatically when the steering fails or can be manually switched on to ensure steering safety as a priority



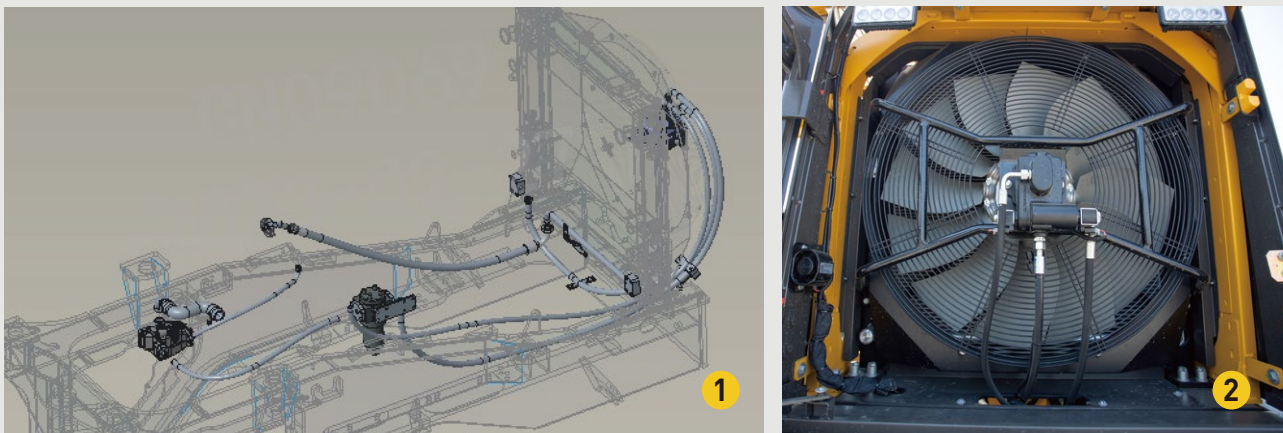
Transmission efficiency

- 1 SDLG automatic gearbox, KD function, power cut-off function, F4R4 gears, easy to control, reliable and durable
- 2 SDLG strengthened axle hub reduction four planetary wheels structure, overall reliability is improved by 60%



Independent heat dissipation intelligent temperature control

- 1 Independent cooling system: adopts gear pump and piston motor. The fan speed is adjustable according to the temperature, which is energy-saving and comfortable
- 2 The fan can realise the function of forward and reverse rotation, which is convenient for dust removal



Variable hydraulic efficiency and energy saving

- 1 Variable hydraulic system, providing the corresponding flow rate according to the demand, with small overflow loss and low fuel consumption



Comfortable to ride and easy to operate

- 1 Keypad + dashboard manipulation, operation is comfortable and convenient
- 2 Pilot single handle integrated control, integrated FNR, KD, attachments replacement function
- 3 The seat and control box are integrated and move together



L938H

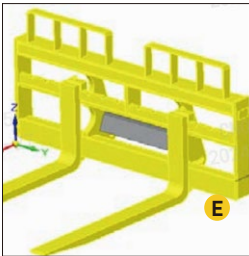
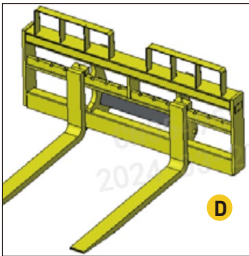
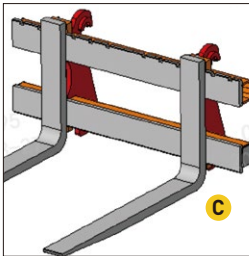
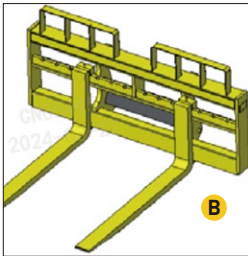
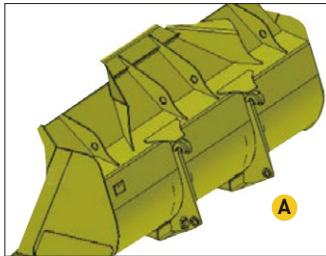
Equipment and Features

Standard configurations

#	Disposition
1	CUMMINS B6.7
2	SDLG VRTE205
3	SDLG AL20H-1
4	Pilot single handle
5	Standard Arm
6	3-Spool Value
7	Single brake pedal
8	20.5-25-16PRTL-TL612 (environmental protection)
9	ROPS Cab
10	AC
11	Start interlocking
12	Tachometer
13	fuel tank with a lock
14	Adjustable steering column
15	Rear view monitoring system
16	Rotate beacon
17	GP bucket 2.1×2616

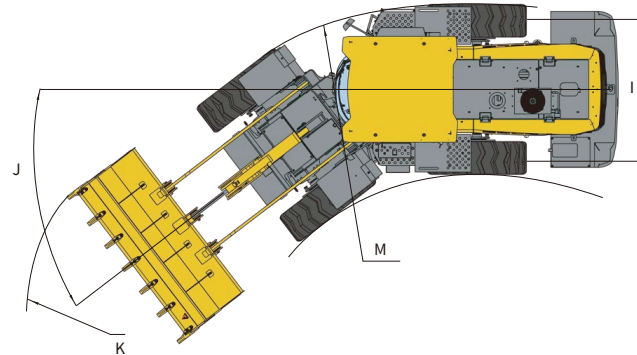
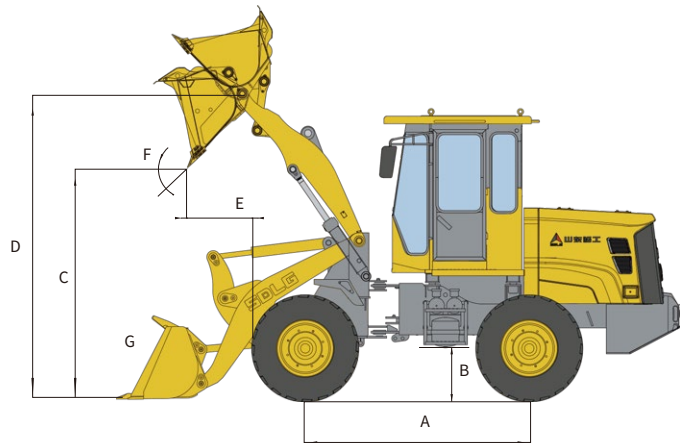
Optional equipment

#	Disposition	
1	LM bucket 2.5×2915 (Quick replacement and anti dropping materials)	A
2	Pallet fork (quick change)1250×2130	B
3	Pallet fork (quick change)1500×1780	C
4	Pallet fork (quick change)1800×2140	D
5	Pallet fork (quick change)1800×2320	E



L938H

Main Parameter



Item	Specifications
Overall dimension	
L×W×H	7700x2616x3400mm
Wheel base(A)	2850mm
Min. ground clearance(B)	440mm
Max. dumping height(C)	2750mm
Lifting height(D)	3850mm
Dumping distance(E)	1210mm
Dumping angle(F)	-45°
Bucket rollback at ground level(G)	43.5°
Wheel tread(I)	1965mm
Steering angle(J)	37°
Horizontal crossing radius(K)	6195mm
Min.turning radius(M)	5300mm

Item	Specifications
Overall parameters	
Bucket capacity	2.1m ³
Rated load	3500kg
Operating weight	12700kg
Max.tractive force	105kN
Max.breakout force	≥80kN

Item	Specifications
Engine	
Model	B6.7
Type	Inline,water-cooled,sixcylinder,directinjection
Rated power	129kW
Rated speed	2200r/min
Engine displacement	6700ml
Cylinder bore/stroke	107/124mm
Max.torque(N.m)/speed(r/min)	881n.m/1300r/min
Emission standard	Europe Stage V
Min.fuel-consume ratio	195g/kW.h
Transmission system	
Traveling brake type	Single-stage three-element hydraulic torque converter
Swing mode	Axis-fixed electric-hydraulic transmission
Gears	Forward 2 reverse 2
Speed at forward/ reverse gear I	0~7.2km/h
Speed at forward/ reverse gear II	0~13km/h
Speed at forward/ reverse gear III	0~28km/h
Speed at forward/ reverse gear IV	0~39.5km/h

Item	Specifications
Hydraulic system of working device	
Type	Hydraulic pilot control
Total time	≤9.42s
Brake system	
Service brake type	Full hydraulic caliper disc brake
Parking brake type	Manual control internal expanding shoe brake
Steering system	
Type	Load sensing full hydraulic articulated steering
System pressure	19MPa
Fill capacity	
Fuel	200L
Hydraulic oil	128L
Engine	13L
Transmission	17+5L
Drive axle	Forward 13+5L reverse 13+5L
Braking system	4L

* The right of final interpretation of the abovementioned parameters shall be reserved by SDLG. No further notice will be given in case of any change,illustrations in the text may not always be the standard illustrations for this model.